



Friday News  
15<sup>th</sup> April 2016

**Building our future, step by step**

<http://www.benthamcpschool.org.uk>

**We are a “GOOD School with an OUTSTANDING Early Years Provision”  
Ofsted February 2016**

#### IMPORTANT DATES

We have had final confirmation that Year 2 SATS will now be taking place during the week commencing **16<sup>th</sup> May 2016**.

Can parents please try their very best to ensure that children attend school **EVERY DAY** during this important week. As a school we have been busy preparing children and reassuring them about SATS it is our aim to support every child through this potentially stressful time. If, as a parent, you would like information on how you can further support your child, please do not hesitate to contact your child's class teacher.

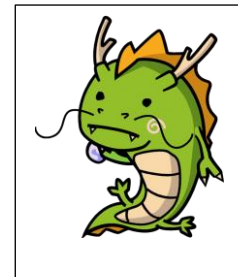


#### St George's Day

St George is the patron saint of England. His emblem, a red cross on a white background is the flag of England and part of the British flag. St George's emblem was adopted by Richard the Lion Heart. The King's soldiers wore the emblem on their tunics to avoid confusion in battle.

The anniversary of St George's Day is the 23<sup>rd</sup> April, and this date is seen as **England's National Day**.

According to legend, St George was a soldier in the Roman Army who bravely slaughtered a dragon and saved a Princess. To recognise this important national day, we are holding a 'Name the Dragon' competition. The cost is £1.00 per entry, and all proceeds will go towards purchasing more new and exciting books for the school's Reading Challenge Reward Scheme.



The lucky child who successfully picks the dragon's name from the list will win our friendly dragon on Friday 22<sup>nd</sup> April. We will also be celebrating the day by offering a 'Feast fit for a King'. All children are welcome to join in. Meals are free of charge to those children in classes 1 and 2. £1.60 each per Nursery child and £2.10 per child in Key Stage 2. Please order on the morning of Friday 22<sup>nd</sup> April at registration time.

**AFTER SCHOOL AND BREAKFAST CLUB** We offer excellent out of hours childcare at the school. Every weekday morning Breakfast Club runs from 8.00am. The cost per child per session is only £4.00 and this includes a delicious healthy breakfast. Our After School Club runs from 3.30pm every day. Sessions include craft activities, sewing, outdoor play, computer access and much, much more. Early Bird costs £5.00 per child and runs from 3.30pm until 4.45pm, the price includes a healthy snack and drink. Full sessions run from 3.30pm until 6.00pm and are priced at £7.50 per child with a discount sibling rate of £6.50, this price includes a snack, drink and tea.

**SPRING CARAVAN PARK RACES** with Jill Eccleston and Andy Mouncey. Run Bike Fun. On Sunday 17<sup>th</sup> April Riverside Caravan Park will be hosting this year's park races. Registration opens at 1.00pm with briefing and transitions skills sessions taking place at 1.45pm. Racing starts at 2.00pm. The course is a grass loop round a fishing pond. The inner loop for running 250m and the outer loop for cycling 300m. The area is VERY spectator friendly and everyone can see all the action all of the time. There are many categories for the following groups of participants: 4-6 years, 7-10 years, 11-15 years, The Gasper for Grown-ups and a Family/Team Relay. All that is needed to take part is a Mountain or Cross Bike, safety helmet, and appropriate footwear. Entry is £5.00 per child. For more information contact Jill on 07955 342344 or Andy on 07799 063115. [www.runbikefun.co.uk](http://www.runbikefun.co.uk)

**ATTENDANCE MATTERS** During the week 21st March to 24th March class attendance was as follows:-

Class One	93.18%	Class Four	99.55%
Class Two	95.98%	Class Five	100.00%
Class Three	97.77%		



The 'whole school' percentage for attendance since the start of the new academic year is currently **96.55%**

**REMINDER** Can we just remind parents that if their child is off school for any reason to contact the school office to report their absence **as soon as is possible**. This ultimately avoids 'unauthorised' absences and the need for text messages to be sent to parents. It is also imperative that parents notify the school office if their contact details have changed, in addition, if a parent requires text messages to be sent to more than one mobile number the office will need details of the additional mobile number – thank you.

**PLEASE CONSIDER** when making doctors, hospital or dental appointments bringing your child into school first in order that they can register or collecting them after 1.00pm, ideally and where possible, please make appointments out of school time – although it is appreciated that this is not always possible.

**Good News for Settle College**

Settle College have recently achieved two awards from the SSAT for their GCSE examination results based on progress and attainment. Settle College are graded in the top 10% of schools for the country for their progress and in the top 20% of non-selective schools for attainment.

Settle College have also recently achieved the Leading Edge School Status. This is a network of high-performing schools across the country. This information is based on the Summer 2015 examination results and recent Ofsted Report.

**NYCC Craven District – Children and Families (Prevention) .... What's on locally?**

1.30pm to 3.00pm	Sunbeams Group (15/04, 06/05, 10/06, 01/07)	Bentham Methodist Church
2.00pm to 4.00pm	Child Health Clinic (12/04, 26/04, 10/05, 24/05, 07/06, 21/06, 05/07, 19/07, 02/08, 16/08, 30/08)	Bentham Health Centre
1.30pm and 3.00pm	Stay and Play	Bentham C P School

At a glance..... the week ahead.....			
19/04/2016	1600	Football Tournament at Ingleton	Children Aware
22/04/2016	0840	Crucial Crew	Year 6 Children
25/04/2016	0915	Health Team Visit	Year 6
25/04/2016	1600	<b>Quad Athletics Event</b>	Children Aware

